

PLANT OPERATION, MAINTENANCE AND OTHER ISSUES

Safety should always be a top priority





Eyewash/Showers & Dip-Tanks

Must be accessible



To be successful, you need to know how...



We have 21 Eyewash/Showers, 6 self contained
Eyewash stations and 54 Fire Extinguishers



Confined Space Barriers

Safety and regulatory are a big part of our operations

- ▣ Training and documentation
- ▣ Time consuming but essential
- ▣ Our CUPA says – *If its not documented it never happened*





Cross-train employees as much as possible

- ▣ Things happen, employees get sick, injured or want to take vacation.
- ▣ When business is at it's peak you need all in the game - Purchasing, Trucking, Dispatching and Plant Operators must be a Team

Why, not just how

- ▣ Why do it right the first time
- ▣ Why ask before trying the new mix on a large scale
- ▣ Why maintenance is so important
- ▣ Why I don't want to have to explain the streaks in the farmers field
- ▣ Why do I get to clean the goo out of the tank that was loaded with the wrong product

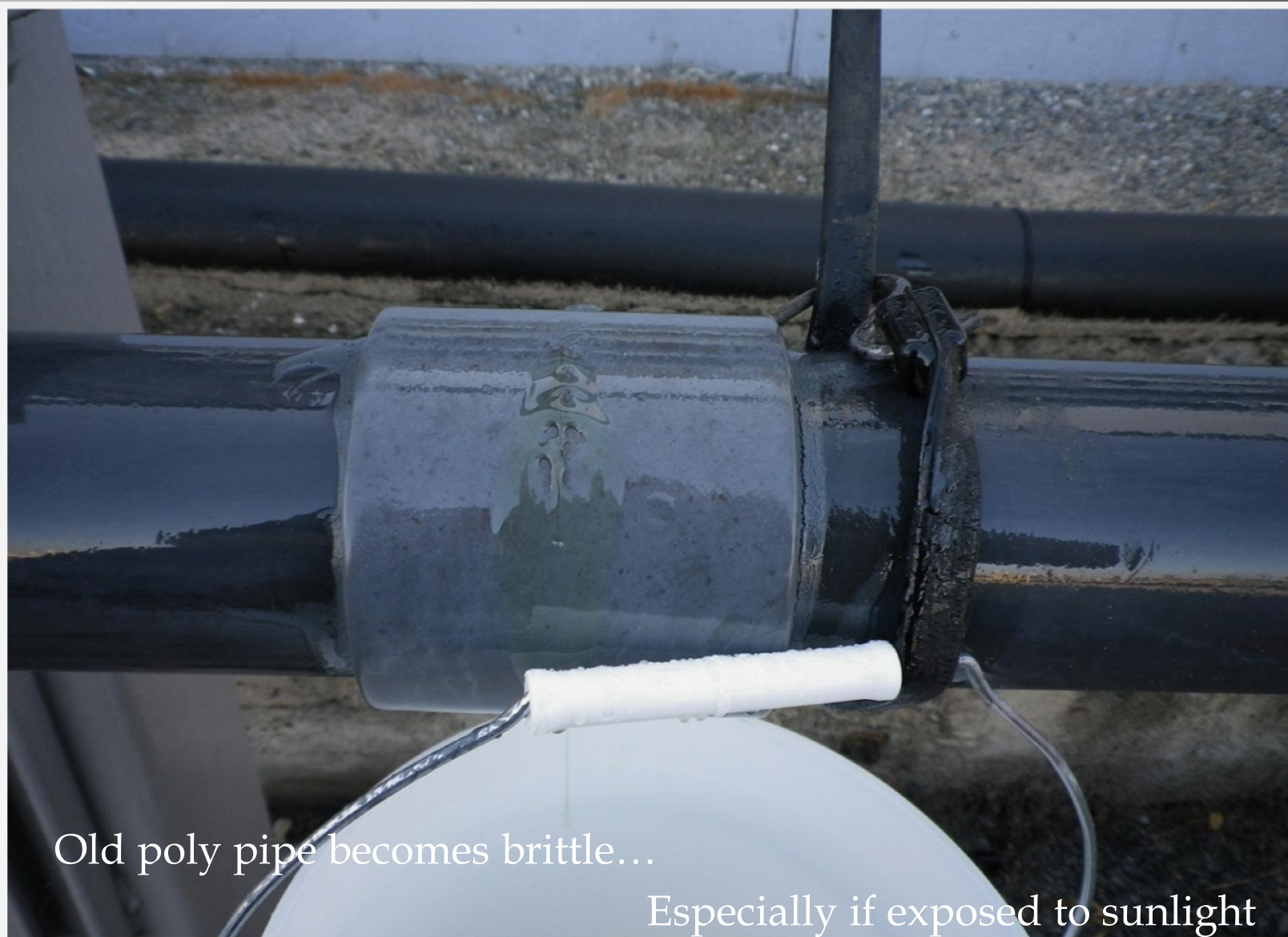


3-18-18 Crystals









Old poly pipe becomes brittle...

Especially if exposed to sunlight



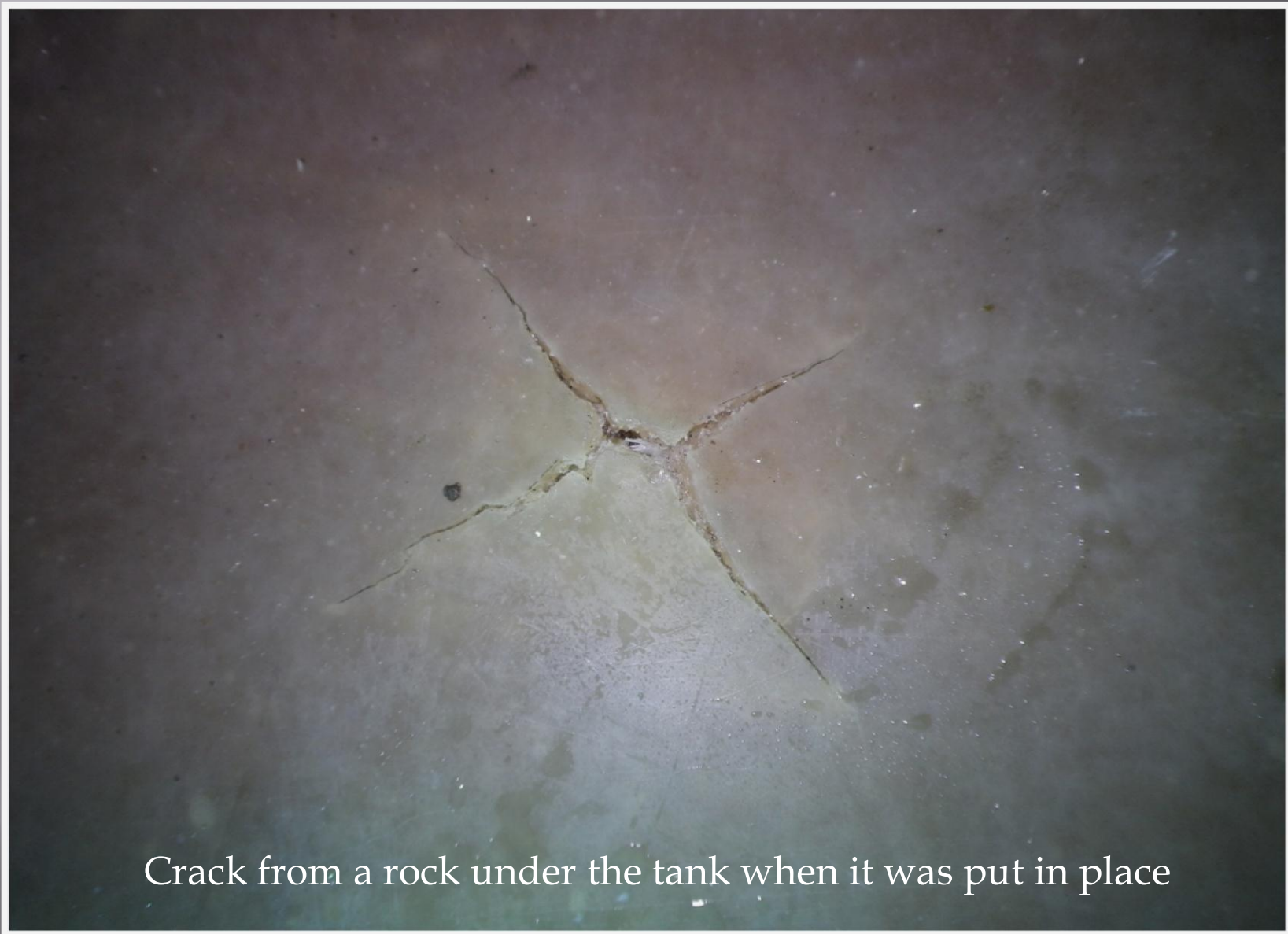
HDPE Piping



You must build in some relief for
expansion/contraction



Don't clamp tightly to supports – allow room for movement



Crack from a rock under the tank when it was put in place



\$1,200 Rock



INCHES

1



Repaired under Warranty...Never hurts to ask



You never know what you will find when you open the
door



Quality product is essential...This tank was fine two years prior

Maintenance is crucial

- ▣ Fertilizer can do bad things to unprotected metals
- ▣ Unmaintained equipment will fail at the most inconvenient times
- ▣ If something is leaking it seldom fixes itself
- ▣ Customers and regulatory inspectors frown on poorly maintained equipment or equipment that is not working correctly

CMMS

- ▣ Computerized Maintenance Management System
- ▣ Helps with Cal-ARP for our ammonia system
- ▣ Great tool for maintenance tracking and scheduling
- ▣ Allows remote access to maintenance files, equipment inventory lists and operators manuals



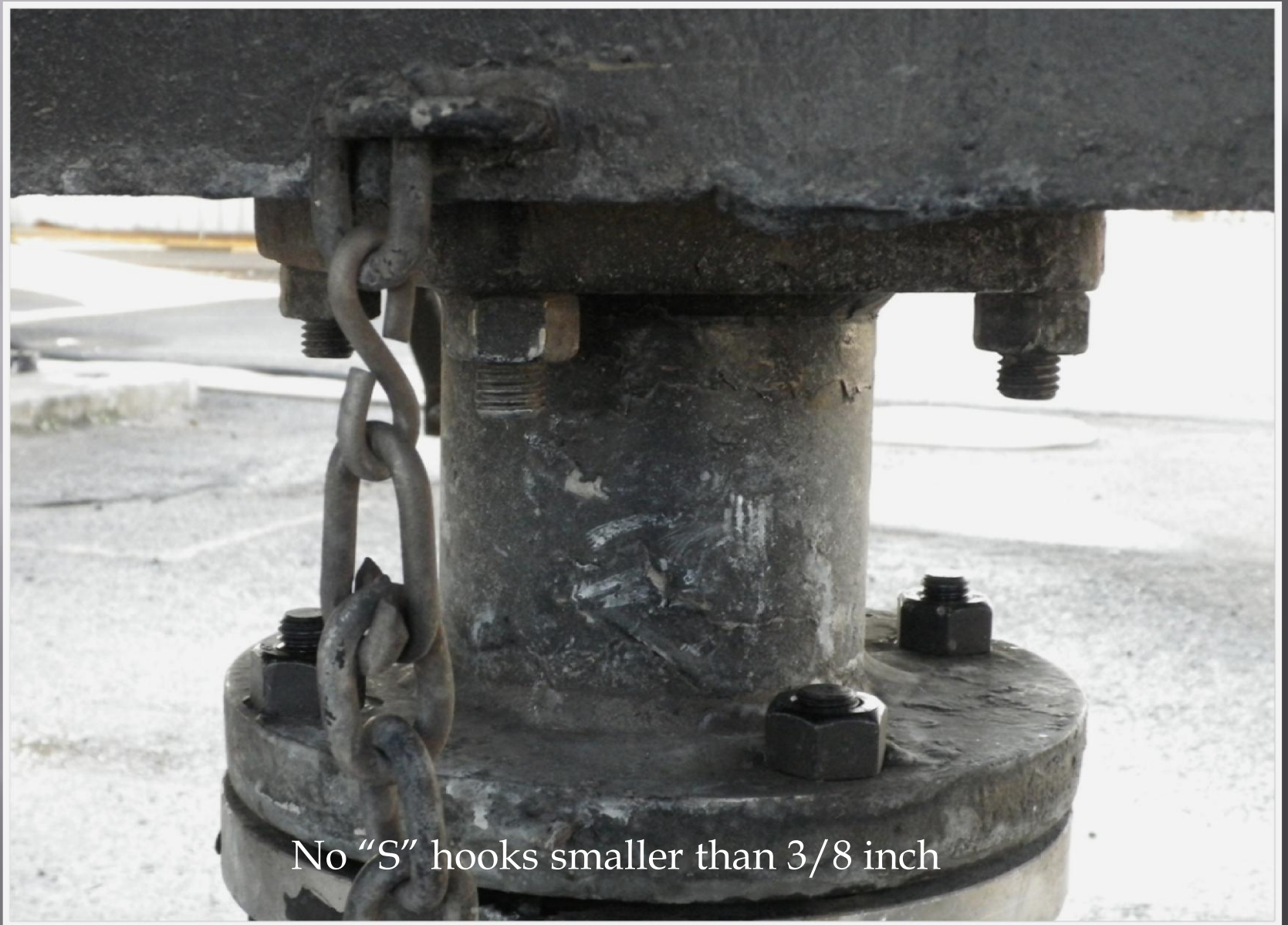
PRODUCT EMERGENCY
Leak, Fire, Exposure or Accident
CHEMTREC - DAY OR NIGHT
1-800-424-9300

GLASSFIBER LINED TANK. DO NOT WELD,
BOILING WATER, OR SHARP
CLEAN TANK INTERIOR. ENTER
WITH RUBBER SOLED SHOES ONLY.

VENT TANK WHEN UNLOADING
CONSULT OWNER BEFORE
REPAIRING TANK.
GLASSFIBER INSULATION
DO NOT EXCEED 450 F

Other issues lately – Is it a stain or a spill?





No "S" hooks smaller than 3/8 inch



If it leaves our facility this way – we can get the violation